



274



275



276



277

278



279



280



281

284.
Lady's 18kt Gold Wristwatch, Piaget, "Polo," the goldtone dial with abstract numeral indicators, enclosing quartz movement, nos. 841C701, 448132, 18 mm, boxed, with papers, (additional links).
\$1,500-2,500
285.
Stainless Steel Automatic Wristwatch, Bulgari, "Sport," the white dial with abstract numeral indicators and date aperture enclosing automatic movement, bezel engraved with BULGARI, completed by a tapering band with deployant clasp.
\$800-1,200
286.
Stainless Steel Wristwatch, Cartier, "Santos," the white guilloché dial with Roman numeral indicators, enclosing automatic movement, polished bezel and band with exposed rivets, completed by a deployant clasp, 23 mm, signed.
\$800-1,200
287.
18kt White Gold and Diamond Wristwatch, Patek Philippe, the blue dial with four diamond numeral indicators, diamond bezel, enclosing manual-wind movement, completed by a mesh band with deployant clasp, interior cir. 6 in., 20 x 28 mm, triple signed.
\$2,500-3,500
288.
18kt Gold Wristwatch, Cartier, "Tank Louis," the ivorytone dial with Roman numeral indicators, no. 1140, serial number CC156359, joined to black leather strap.
\$800-1,200
289.
Lady's 18kt Gold Wristwatch, Cartier, "Cartier 1847," the ivorytone dial with Roman and Arabic numeral indicators, blue stone winding stem, signed black leather strap.
\$1,000-1,500
290.
Stainless Steel Wristwatch, Franck Muller, "Casablanca," the buff-color dial with Arabic numeral indicators, enclosing automatic movement, completed by a leather strap, 27 x 33 mm.
\$2,500-3,500
291.
Gentleman's 18kt Gold Wristwatch, Audemars Piguet, the ivorytone dial with baton numeral indicators, enclosing manual-wind, 17-jewel movement no. 71289, case no. 14511, Swiss guarantee stamps, 30 mm, completed by an 18kt gold brickwork bracelet, signed movement, case, and dial.
\$1,200-1,800
292.
Steel and 18kt Gold Cuff Links, Van Cleef & Arpels, each double link designed as a rod bound by a ribbed band, no. 125792-5, French guarantee stamps and maker's marks, signed, boxed.
\$500-700
293.
Edwardian Enamel and Diamond Pendant/Watch Necklace, Spaulding, the silvertone dial with Arabic numeral indicators, enclosing jeweled Waltham movement no. 4185135, the blue and white enamel case with rose-cut diamond surmount, suspended from a platinum fancy baton link chain highlighted by spectacle-set diamonds, 28 mm, 29 in., (enamel loss, chain extended by white gold links).
\$500-700
294.
Antique 14kt Bicolor Gold and Seed Pearl Brooch, designed as a snaffle bit with two pavé-set seed pearl horses joined by a buckle strap, lg. 2 in.
\$300-500
295.
Antique 14kt Gold Watch Chain, composed of delicate, flattened curb links, 14.0 dwt, lg. 59 in.
\$300-500
296.
Edwardian Enamel, Mother-of-pearl, and Diamond Cuff Links, France, each double link with white enamel and mother-of-pearl rings centering an old European-cut diamond, French guarantee stamps and maker's marks, (small enamel losses, small dent to reverse of one link).
\$600-800
297.
18kt Gold Hunting Case Pocket Watch, A. Lange & Söhne, the white enamel dial with Arabic numeral indicators, and subsidiary seconds dial, enclosing lever escapement movement, monogrammed case no. 64459, 50 mm, (requires repair).
\$600-800
298.
Antique 18kt Gold Pocket Watch, F.B. Adams and Sons, London, the ivorytone dial with roman numeral indicators, subsidiary seconds dial, key-wind movement, 16 size, accompanied by signed guarantee from Ulysse Breting au Locle dated Sept. 19, 1860.
\$1,500-2,000



287

288

289

290

286

291

292

293

285

294

295

296

297

298



299.
18kt Gold Wristwatch, Piaget, dated 1968, the basketweave dial with baton numeral indicators, enclosing manual-wind movement, completed by a basketweave strap, no. 9131H5 and 141495, 56.1 dwt, lg. 7 1/8 in., signed bracelet and dial.
 \$2,500-3,500

300.
Stainless Steel Wristwatch, Rolex, “Chronograph,” model no. 6034, c. 1952-53, the silvertone dial with three subsidiary dials, plain polished bezel and case with round pushers and Super Oyster crown enclosing 17-jewel automatic movement, case serial no. 847267, 35 mm, completed by a leather band, (with later model no. 6238 dial).

Note: This watch was among the relatively small production models which were the precursors to the “Daytona.”
 \$12,000-18,000

301.
Lady’s 18kt Gold and Diamond Wristwatch, Richard, the ivorytone dial with abstract and Arabic numeral indicators, 17-jewel Swiss movement, triple signed, single-cut diamond m el ee lugs joining a woven gold strap, 27.6 dwt, lg. 7 in.
 \$600-800

302.
Lady’s 14kt Gold and Diamond Covered Wristwatch, Ebel, the goldtone metal dial with abstract numeral indicators, enclosing manual-wind 17-jewel movement, case no. 0232900, concealed by a full-cut diamond circular motifs, approx. total wt. 1.23 cts., completed by woven bracelet, 26.4 dwt (excluding movement), lg. 6 1/8 in., signed dial.
 \$700-900

303.
14kt Gold Watch Pin, Concord, the round ivorytone dial with stick indicators, frame designed as a ship’s wheel.
 \$250-350

304.
18kt Gold Wristwatch, Rolex, “Oyster Perpetual,” the goldtone dial with baton numeral indicators, enclosing automatic movement, completed by a tapering bracelet with deployant clasp, design no. 67188 and W216262, signed.
 \$800-1,200

305.
Art Deco Lady’s Platinum Wristwatch, Tiffany & Co., the round silvertone dial with Arabic numeral indicators, C.H. Meylan 17-jewel movement, case no. 56367, maker’s mark for Whiteside & Blank, later strap.
 \$600-800

306.
Antique 18kt Gold and Enamel Open Face Pocket Watch, J.E. Caldwell, the white enamel dial with Roman numeral indicators, enclosing jeweled bar movement, lever-set, the case with cloisonn e enamel floral and foliate motifs, 33 mm, signed on the cuvette, (requires repair, enamel loss).
 \$300-500

307.
Sterling Silver Golf Watch, Dunhill, c. 1930, "Chronometre Tavannes," the streamlined line-engraved case with double doors opening to an ivorytone dial with Arabic numeral indicators, no. 825925 and 887, lg. 1 3/4 in.
\$100-200
308.
18kt Gold and Coin Cuff Links, each bezel-set with a ancient-style coin, depicting a laurelled youth.
\$150-250
- 308A.
14kt Gold and Gem-set Cigarette Box, with synthetic sapphire and old European-cut diamond accents, 66.4 dwt, Austro-Hungarian hallmarks, together with a 14kt gold cigarette lighter, Austrian marks, a pair of 18kt gold cuff links, 12.9 dwt, and a cigarette holder, (box damaged).
\$1,800-2,200
309.
Lady's 18kt Gold Wristwatch, Tiffany & Co., the ivorytone metal dial with baton numeral indicators, enclosing manual-wind, 17-jewel movement, circular bezel, completed by ribbed, demilune links, lg. 6 in., Swiss guarantee stamps, signed dial, (with additional links).
\$800-1,200
310.
Set of Playing Cards, Cartier, the paperboard case enclosing a double deck depicting silver elephant and driver on green and yellow grounds, Aces and Jokers with Indian motifs.
\$50-100
- Lots 311-316 are pictured on the back interior cover*
311.
Rose-cut Diamond and Seed Pearl Earpendants, each designed as a flexible cascade of rose-cut diamond branches suspending seed pearls and a pear-shape diamond terminal, silver-topped gold mounts, lg. 2 1/2 in.
\$800-1,200
312.
Enamel, Diamond, and Seed Pearl Necklace, India, designed as blue enamel plaques set with rose-cut diamonds and suspending a seed pearl fringe highlighted by blue beads, reverse with polychrome floral and foliate enamel designs, completed by an adjustable braided rope.
\$1,500-2,000
313.
Two Enamel Chains, each designed as polychrome champlevé enamel shaped beads joined by trace link chain and cage-form wire beads, gold mounts, lg. 28 and 29 1/2 in.
\$1,500-2,000
314.
14kt Gold Bead Necklace, composed of sixty-five beads measuring approx. 8.95 mm, 41.9 dwt, lg. 23 in.
\$800-1,200
315.
Enamel and Diamond Bangle, India, the polychrome enamel form bezel-set with native rose-cut diamonds dragon's head terminals, gold mount, interior cir. 6 1/4 in.
\$1,500-2,000
316.
18kt Bicolor Gold, Ruby, and Diamond Flower Earclips, each centering a circular-cut ruby framed by diamond m \acute{e} l \acute{e} c, dia. 1 in.
\$1,000-1,500
317.
14kt Gold, Sapphire, and Diamond Flower Suite, Cartier, comprising brooch and earclips each centering a cluster of sapphire and diamond m \acute{e} l \acute{e} c, 14kt brushed gold mounts, lg. 1 1/2 and 1 in., brooch no. 3688, signed CARTIER.
\$1,200-1,800
318.
Retro 14kt Gold, Sapphire, and Diamond Clover Clip/Brooch, Cartier, centering three sapphire and diamond m \acute{e} l \acute{e} c, 1 3/8 in., no. 277, signed CARTIER.
\$500-700
319.
18kt Gold and Diamond Brooch, France, designed as a fern frond set with rose and old European-cut diamonds, platinum accents, French guarantee stamps.
\$800-1,000
320.
Retro 14kt Gold Necklace, Tiffany & Co., composed of chevron links, 29.8 dwt, lg. 15 in., signed.
\$800-1,200
321.
14kt Gold Ribbon Suite, Tiffany & Co., comprising a brooch and earclips, maker's mark for Preformed Parts, signed.
\$800-1,000
322.
Retro 14kt Gold, Citrine, and Ruby Suite, comprising ring, earclips, and brooch set with emerald-cut citrines, ruby m \acute{e} l \acute{e} c highlights, size 6.
\$500-700

323.
Ruby and Diamond “Forget-me-not” Brooch, Van Cleef & Arpels, New York, 1941, designed as five ruby *mêlée* blossoms centered by diamonds, stems bound by an inscribed card, gold mount, no. 1113.
 \$2,500-3,500
324.
Platinum, Aquamarine, and Diamond Ring, Raymond Yard, prong-set with an emerald-cut aquamarine measuring approx. 15.55 x 15.05 x 11.20 mm, flanked by full-cut diamonds, size 6, signed.
 \$1,500-2,000
325.
14kt Bicolor Gold Bracelet, composed of abstract, conical links, 23.8 dwt, lg. 8 1/4 in., maker’s mark.
 \$600-800
326.
Retro 14kt Gold and Gem-set Earclips, Tiffany & Co., each buckle motif set with ruby and diamond *mêlée*, 4.9 dwt, lg. 3/4 in., signed.
 \$2,500-3,500
327.
Aquamarine and Diamond Flowerhead Earclips, Tiffany & Co., c. 1940s, each set with pear-shape aquamarines, centering a full-cut diamond *mêlée*, gold mount, signed, boxed.
 \$2,500-3,500
328.
18kt Gold, Ruby, and Diamond Brooch, Ostier, designed as a leaf, set with borders of rubies and diamonds, lg. 3 in., maker’s mark.
 \$2,000-3,000
329.
Platinum, Aquamarine, and Diamond Ring, prong-set with a fancy-cut aquamarine measuring approx. 20.20 x 13.90 x 9.60 mm, full-cut diamond *mêlée* shoulders, millegrain accents, size 5.
 \$1,000-1,500
- 329A.
Art Deco 14kt Gold and Carnelian Bracelet, c. 1935, composed of rectangular links with stylized leaf motifs alternating with shaped cabochon carnelians, engraved gallery, lg. 8 in., Continental hallmarks.
 \$800-1,000
330.
14kt Gold Earclips, Tiffany & Co., designed as ribbon motifs, signed, with maker’s mark for Preformed Parts, each later set with a pear-shape brownish-pink diamond.
 \$1,500-2,000
331.
18kt Gold Bracelet and Earclips, Tiffany & Co., a hinged ropetwist bangle, interior cir. 7 in., and a pair of spiral ropetwist earclips with later 14kt gold findings, 17.6 dwt, signed.
 \$300-500
332.
14kt Gold and Diamond Suite, comprising brooch and earclips, the ropetwist mounts designed as abstract foliate motifs, set with single-cut diamond *mêlée*, approx. total wt. 1.25 cts.
 \$800-1,200
333.
Two Pairs of Gold and Diamond Earclips, one in 18kt gold with bezel-set diamond *mêlée*, one in 14kt gold with mabe pearls.
 \$300-500
334.
18kt Gold and Mabe Pearl Suite, Egypt, comprising earclips and clip/brooch set with mabe pearls, applied bead and ropework accents, lg. 2 1/8 and 1 1/2 in., assay marks.
 \$500-700



323



324



325



326



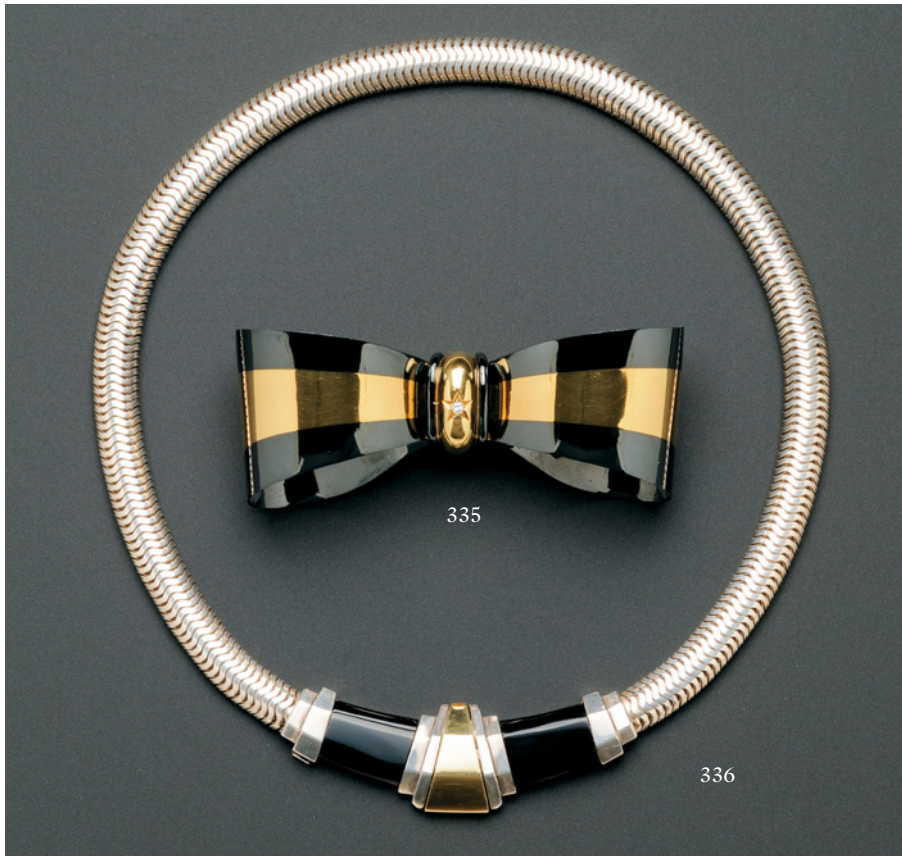
327



328



329



335.
Anodized Steel and 18kt Gold Bow Pendant/Brooch, Italy,
 composed of snake chain centering two onyx plaques, lg. 18 in.,
 signed, (no stock number).
 \$1,200-1,800

336.
Sterling Silver, 18kt Gold, and Onyx Necklace, Cartier,
 composed of snake chain centering two onyx plaques, lg. 18 in.,
 signed, (no stock number).
 \$1,000-1,500

337.
Citrine Bangle Bracelet, channel-set with step-cut citrines
 interspersed with sugarloaf cabochon citrine accents, gold mount,
 56.2 dwt, interior cir. 6 3/4 in.
 \$3,000-5,000

338.
18k Gold and Onyx Bracelet, the hinged bangle centering
 polished onyx, 67.3 dwt, interior cir. 6 1/2 in.
 \$3,000-4,000

339.
18kt Bicolor Gold, Madeira Citrine, and Diamond Ring,
 prong-set with an emerald-cut citrine measuring approx. 26.00 x
 20.00 x 12.70 mm, bead-set diamond shoulders, size 6 1/2.
 \$2,000-3,000

340.
18kt Gold Necklace, designed as a graduating fringe, 44.7 dwt,
 lg. 17 1/2 in.
 \$1,500-2,000

341.
18k Gold and Malachite Earclips, each domed central element
 with malachite border.
 \$300-500

342.
18kt Gold and Enamel Earclips, De Vroomen, the stepped
 forms with red basse taille enamel, lg. 1 3/8 in., British hallmarks,
 signed.
 \$800-1,200

343.
18kt Gold, Emerald, and Diamond Brooch, Boucheron,
Paris, c. 1960s, the ribbon motif set with full and single-cut
 diamonds and circular-cut emeralds, signed.
 \$3,000-4,000

344.
High-Karat Gold and Jadeite Saddle Ring, the broad rounded
 mount set with a jadeite tablet, size 4 3/4.
 \$300-400

345.
18kt Gold, Coral, and Diamond Earclips, each designed as a
 cluster of pink and red coral cabochons, full-cut diamond m el e
 highlights.
 \$1,500-2,000



337



338



339



340



341



342



343



345



344

346.
Pair of Angelskin Coral and Gem-set Bar Pins, highlighted by emerald and diamond m  le  , cultured pearl terminals, 18kt bicolor gold mounts, lg. 2 3/4 in.
\$1,000-1,500
347.
Platinum, Peridot, and Diamond Ring, prong-set with a cushion-cut peridot measuring approx. 12.85 x 11.75 x 7.25 mm, the shoulders set with circular-cut peridot accents and full-cut diamonds, approx. total diamond wt. 2.36 cts., size 4 3/4.
\$2,000-3,000
348.
Emerald and Diamond Necklace, prong-set with circular-cut emeralds and full-cut diamonds graduating in size, approx. total diamond wt. 7.40 cts., 14kt gold mount, lg. 17 1/4 in.
\$3,000-4,000
349.
18kt Gold and Diamond Earclips, each prong-set with diamond m  le  , approx. total wt. 9.20 cts., lg. 2 in.
\$5,000-7,000
350.
18kt Gold and Diamond Ring, Heyman Brothers, prong-set with an oval-cut diamond weighing 0.53 cts., framed by tapered diamond baguettes, total wt. 2.70 cts., size 4, no. 11455, maker's mark.
\$2,000-3,000
351.
18kt Gold, Emerald, and Diamond Bracelet, bezel-set with eight oval-cut emeralds framed by round brilliant-cut diamonds, joined by diamond florets, approx. total diamond wt. 5.76 cts., 30.6 dwt, signed MAG.
\$3,500-4,500
352.
18kt Gold and Gem-set Ring, the knot form set with diamond, emerald, and sapphire m  le  , size 7, signed PK.
\$500-700
353.
Diamond Eternity Band, set with twenty full-cut diamonds, approx. total wt. 1.40 cts., 14kt gold mount, size 5 1/2.
\$400-600
354.
Diamond Eternity Band, bead-set with diamond m  le  , approx. total wt. 1.16 cts., gold mount, size 5.
\$500-700
355.
Platinum and Diamond Eternity Band, set with diamond baguettes, size 5, (one diamond missing).
\$150-250
356.
Platinum and Diamond Ring, set with a single diamond baguette, size 4.
\$500-700
357.
Platinum, Sapphire, and Diamond Eternity Band, set with step-cut sapphires and princess-cut diamonds, size 5.
\$400-600
358.
18kt Gold and Ruby Eternity Band, set with step-cut rubies, no. J781, with worn circular maker's mark, possibly Oscar Heyman.
\$800-1,200
359.
Platinum and Diamond Ring, prong-set with a line of six full-cut diamonds, approx. total wt. 0.72 cts., size 4 1/2.
\$800-1,200
360.
Two Diamond Jewelry Items, a band set with baguettes and diamond m  le  , platinum and white gold mount, size 6, and a diamond pendant set with three old European-cut diamonds, approx. total wt. 1.25 cts., white gold mount.
\$500-700



346

348

347

349

350

351

352

361.
18kt Gold, Onyx, and Diamond Bracelet, the hinged, tapering bangle set with shaped onyx tablets, and full-cut diamonds, ribbed shoulders, approx. total diamond wt. 2.36 cts., 36.5 dwt, interior cir. 6 3/4 in.
\$2,500-3,500
362.
18kt Gold and Colored Diamond Brooch, designed as a rose blossom with oxidized surface, pavé-set with full-cut diamonds, enhancer fitting on reverse.
\$1,500-2,000
363.
18kt Gold and Diamond Earclips, Emis, each designed as overlapping leaves in yellow and white gold set with full-cut near colorless and yellow diamonds, approx. total wt. 5.00 cts., signed.
\$3,000-4,000
- Note: Emis Beros Designs, located in the Via Testa courtyard off Worth Avenue in Palm Beach, produced custom-made jewelry.
364.
18kt Gold and Yellow Diamond Necklace, bead-set with a line of 195 yellow diamond m \acute{e} l \acute{e} e, approx. total wt. 2.25 cts., lg. 15 5/8 in.
\$3,000-4,000
365.
Colored Diamond and Diamond Bypass Ring, bezel-set with a marquise and yellow marquise-cut diamond, each weighing approx. 0.60 cts., flanked by diamond and yellow diamond m \acute{e} l \acute{e} e shoulders, size 5 3/4.
\$5,000-7,000
366.
18kt Gold and Diamond Tulip Clip Brooch, France, designed as adjustable wire mesh petals opening to reveal a cluster of diamond m \acute{e} l \acute{e} e, 11.3 dwt, lg. 2 1/2 in., French guarantee stamps and maker's mark.
\$1,000-1,500
367.
18kt Gold and Diamond Brooch and Earclips, the earclips designed as teardrop motifs, the brooch of abstract form, set with full-cut diamonds, approx. total wt. 8.67 cts., lg. 1 1/8, 2 3/4 in.
\$10,000-12,000
368.
18kt Gold and Diamond Bow Earclips, Tiffany & Co., each center element set with full-cut diamond m \acute{e} l \acute{e} e, lg. 1 in., signed.
\$1,000-1,500
369.
18kt Gold, Onyx, and Diamond Earclips, Emis, the ribbed oval forms with onyx border, centering clusters of full-cut diamonds, approx. total diamond wt. 1.30 cts., signed.
\$1,000-1,500
370.
18kt Gold Knot Earclips, David Webb, designed as ribbed forms, dia. 1 in., signed.
\$1,500-2,000
371.
18kt Gold Earclips, Mauboussin, Paris, each designed as a scored half hoop, lg. 7/8 in., French maker's marks and guarantee stamps, signed.
\$800-1,000
372.
18kt Gold Charms, H. Stern, suspending heart, key, knot, and lily pad motifs, and a cultured pearl, 6.8 dwt, maker's marks.
\$250-350
373.
18kt Gold Squiggle Brooch, Paloma Picasso, Tiffany & Co., lg. 1 7/8 in., signed Paloma Picasso and Tiffany & Co., boxed, together with 14kt gold knot carstuds.
\$400-600
374.
18kt Gold "Love" Bangle Bracelet, Aldo Cipullo, Cartier, with screwdriver, interior cir. 6 7/8 in., signed.
\$1,000-1,500
375.
Platinum, Sapphire, and Diamond Ring, Parenti Sisters, centering a cushion-cut sapphire weighing 1.42 cts., flanked by diamonds, unsigned, boxed, size 4 3/4, accompanied by original receipt.
\$1,200-1,500

361



362



363



365



364



366



367



368



376.
18kt Gold, Hardstone Cameo, and Diamond Clip Brooch, Emis, centering a carnelian cameo of a classical man, framed by full-cut diamonds, approx. total wt. 4.26 cts., dia. 2 1/4 in., signed.
 \$3,000-4,000
377.
Diamond and Mother-of-pearl Brooch, Emis, the central blossom and stem pavé-set with diamond m \acute{e} lée and framed by carved mother-of-pearl flowers, approx. total wt. 3.42 cts., signed.
 \$1,500-2,000
378.
18kt Gold and Aventurine Quartz Earclips, Angela Cummings, each oval cabochon set with studs, lg. 1 in., signed.
 \$800-1,200
379.
18kt Gold “Signature” Necklace, Tiffany & Co., composed of “X” form links, 62.3 dwt, lg. 16 3/4 in., signed T&Co.
 \$2,000-3,000
380.
18kt Gold, Rock Crystal, and Gem-set Pendant/Brooch, with carved crystal petals, bezel-set diamond and ruby m \acute{e} lée accents, 2 x 1 3/4 in.
 \$700-900
381.
Mabe Pearl and Diamond Earclips, Schlumberger, Tiffany & Co., each mabe pearl within ropetwist borders, full-cut diamond m \acute{e} lée highlights, 18kt gold and platinum mount, dia. 7/8 in., signed.
 \$600-800
382.
18kt Gold, Blue Lace Chalcedony, and Hematite Intarsia Earclips, Angela Cummings, lg. 1 in., signed.
 \$2,000-3,000
383.
14kt Gold and Turbo Shell Earclips, Seaman Schepps, each designed as a white shell set in gold, cabochon sapphire accents, signed.
 \$600-800
384.
14kt Gold, Turbot Shell, and Emerald Ring, Seaman Schepps, the turbot shell with cabochon emerald terminals, size 6 1/2, signed, (formerly an earclip).
 \$300-500
385.
18kt Gold, Ruby, and Diamond Earrings, each a cluster of marquise and full-cut diamonds and rubies.
 \$400-600
386.
Lady’s 18kt Gold Gem-set Wristwatch, Boucheron, the covered watch with dot and Arabic numeral indicators, back-wind movement, center with lines of prong-set circular-cut sapphires, emeralds, and diamonds, tapering gold band, French guarantee stamps, signed, lg. 6 3/4 in.
 \$3,000-4,000



376



377



378



379



380

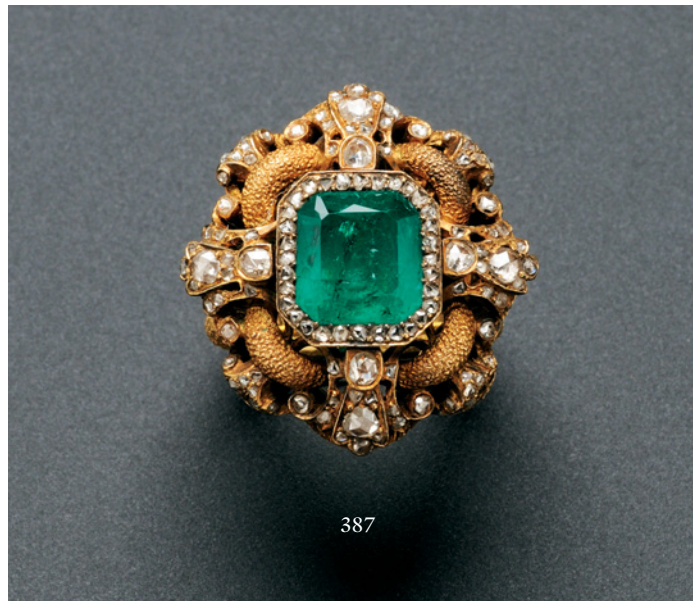


381



382





387

387.
18kt Gold, Emerald, and Diamond Ring, Buccellati, centering a bezel-set square-cut emerald measuring approx. 9.05 x 8.10 x 5.25 mm surrounded by 110 rose-cut diamonds, engraved mount, signed, boxed, size 4 3/4.

Note: Accompanied by copies of original receipt, sketches, and appraisal detailing remount of customer antique bracelet as a ring, (conforming gallery and shank by Buccellati).

\$15,000-20,000

388.
Emerald Bead and Diamond Multi-strand Necklace, Emis, composed of five graduating strands of beads completed by interchangeable 18kt gold and cabochon emerald floral clasp, approx. total diamond wt. 1.83 cts., and platinum and bead-set diamond foliate clasp, approx. total diamond wt. 5.08 cts., lg. 15 1/4 in., signed.

\$10,000-15,000

389.
18kt Gold, Emerald, and Diamond Bracelet, the flexible cuff set with three cabochon emeralds, and full-cut diamonds, approx. total diamond wt. 2.50 cts., 38.2 dwt, interior cir. 5 3/4 in.

\$1,000-1,500

390.
Jadeite and Diamond Ring, prong-set with an oval cabochon measuring approx. 18.60 x 11.85 x 5.50 mm, framed by full-cut diamonds, baguette shoulders, approx. total diamond wt. 1.25 cts., gold mount, size 5.

Note: Accompanied by GIA report no. 16808966, dated January 16, 2008, stating that the jadeite is natural color, with no evidence of impregnation.

\$8,000-9,000

391.
18kt White Gold, Amethyst, Peridot, and Diamond Ring, set with a square-cut amethyst, and fancy-cut peridot shoulders, framed by full-cut diamond m  le, size 6 3/4.

\$800-1,200

392.
18kt Gold, Emerald, and Diamond Earclips, set with cabochon emeralds highlighted by lines of full-cut diamond m  le, approx. total diamond wt. 4.32 cts., lg. 1 3/8 in.

\$3,000-4,000

393.
18kt White Gold, Citrine, and Diamond Earpendants, each set with a fancy-cut citrine and full-cut diamond m  le, lg. 1 1/4 in.

\$800-1,200

394.
18kt Gold, Amethyst, and Enamel Ring, David Webb, centering a cabochon measuring approx. 14.30 x 9.50 mm, green enamel border, size 5 1/2, signed.

\$2,000-3,000

395.
18kt Gold, Emerald, and Diamond Ring, prong-set with an emerald-cut emerald measuring approx. 7.70 x 6.80 x 3.20 mm, in a domed mount set with full-cut diamonds, approx. total wt. 2.80 cts., size 4 1/4, (with guard).

\$1,500-2,000

395A.
Platinum, Brown Zircon, and Diamond Earclips, each bezel-set with a circular-cut zircon measuring approx. 7.70 x 4.60 mm, framed by full-cut diamond m  le, reverse with pierced work, dia. 1/2 in.

\$800-1,200



388



389



390



392



391



393



394



395

396.
18kt Gold and Exotic Wood “Half Link” Earclips, Seaman Schepps, no. 10176, signed.
 \$1,000-1,500
397.
18kt Gold, Citrine, and Enamel Bangle Bracelet, De Vroomen, bezel-set with three cabochon citrines on a red basse taille enamel ground, interior cir. 6 5/8 in., British hallmarks, signed.
 \$3,500-4,500
398.
Multi-strand Canadian Nephrite Jade, Peridot, and Diamond Necklace, composed of five strands of nephrite beads completed by an 18kt gold clasp set with two circular-cut peridot and highlighted by diamond m el e, lg. 16 3/4 in.
 \$1,000-1,500
399.
18kt Gold, Citrine, and Enamel Ring, De Vroomen, bezel-set with a cabochon citrine framed by red basse taille enamel, size 7 1/4, British hallmarks, signed.
 \$1,000-1,500
400.
18kt Gold and Citrine Earrings, Pomellato, each hoop gypsy-set with three cabochon citrines, signed.
 \$1,500-2,000
- 400A.
18kt Gold, Coral, and Diamond “Rose de Noel” Brooch, Van Cleef & Arpels, composed of carved coral petals, centering a cluster of diamond m el e, dia. 1 5/8 in., no. BL138543, French maker’s mark and guarantee stamp, signed, with presentation boxes.
 \$7,000-9,000
401.
18kt Gold, Exotic Wood, and Diamond “Nerval” Clip Brooch, Van Cleef & Arpels, with wood petals, full-cut diamond highlights, French guarantee stamps and maker’s mark, 2 3/4 x 2 1/8 in., no. BL2481, signed.
 \$2,500-3,500
402.
18kt Gold, Exotic Wood, and Diamond “Nerval” Earclips, Van Cleef & Arpels, with wood petals and full-cut diamond highlights, dia. 1 in., French guarantee stamps and maker’s mark, no. BL6300, signed.
 \$1,500-2,000
403.
18kt Gold, Nephrite Jade, and Coral Cuff Links, Villa, each designed as a coral frog on a nephrite lily pad joined to a nephrite cylinder, dia. 5/8 in., signed.
 \$600-800



396



397



398



399



401



400



402



403





404

407.
18kt Gold, Tahitian Pearl, and Diamond "Star" Earpendants, Donna Vock, each designed as a full-cut diamond "X" suspending pearls measuring approx. 9.20, 9.10, 14.70, and 14.40 mm and diamond highlights, total diamond wt. 3.26 cts., lg. 1 3/4 in., signed.

\$7,500-8,500

408.
Natural Color Cultured Semi-Baroque Pearl Necklace, Fiji, composed of twenty-seven black, golden, white, and silver pearls graduating in size from 16.20 to 12.50 mm, completed by an 18kt gold boule, lg. 19 1/4 in.

\$3,000-5,000

409.
South Sea Pearl Necklace, composed of thirty-one white pearls with rose overtones, graduating in size from approx. 15.50 to 12.20 mm, completed by an 18kt white gold boule clasp, lg. 18 in.

\$12,000-15,000

410.
18kt Gold, Tourmaline, Tahitian Cultured Pearl, and Diamond Earclips, Donna Vock, each set with a button pearl measuring approx. 13.30 x 12.50 and 13.20 x 12.30 mm, surmounted by oval and emerald-cut green tourmalines, total wt. 4.75 cts., diamond highlights, total. wt. 0.79 cts., lg. 7/8 in., signed.

\$5,000-7,000

404.
Arts & Crafts Platinum and Moonstone Pendant Necklace, the scrolling pendant with applied beads bezel-set with moonstones and suspended from a moonstone and trace link chain, lg. 3 3/4 and 24 1/2 in.

\$1,500-2,000

405.
Retro 14kt Gold and Enamel Flower Pendant/Brooch, Cartier New York, c. 1940, designed as four reflecting petals centering a sphere with green enamel base, reverse inscribed with patent no. 2199222, dia. 2 in., unsigned, no stock number.

Note: United States Patent 2199222 was assigned to inventor Jules Glaenger and CARTIER INC. in April 1940. A copy of the patent is available with the lot (copy not original).

\$1,000-1,500

406.
18kt Gold and Cultured South Sea Pearl Ring, Angela Kramer, bezel-set with a dome-shaped rose-color pearl measuring approx. 15.60 mm, size 6 1/2, signed.

Note: Purchased at Fred Leighton. Angela Kramer was a New York jewelry designer, collector, and socialite who started her career at F.I.T. Only the best craftsmen were selected to execute her designs, which were executed in the finest materials without regard for cost. They were marketed by Fred Leighton and Primavera Gallery on Madison Avenue. Her production was extremely limited. She died in 2002 at the age of 38.

\$800-1,200

411.
Platinum, Cultured South Sea Pearl, and Diamond Ring, set with a white pearl measuring approx. 13.00 mm, framed by baguette, marquise and single-cut diamonds, size 5 3/4, (sized).

\$1,500-2,000

412.
18kt Gold, Diamond, and Baroque Pearl Ring, Seaman Schepps, the bypass ring set with a black and a white baroque pearl, full-cut diamond m el e accents, size 5 1/2, maker's mark.

\$600-800

413.
18kt White Gold, South Sea Cultured Pearl, and Diamond Earpendants, set with teardrop-shape white pearls measuring approx. 18.70 x 15.30 and 18.70 x 15.60 mm suspended from old European-cut diamond tops, approx. total diamond wt. 1.70 cts., lg. 1 1/2 in.

\$5,500-7,500

414.
Diamond Ring, c. 1920, of navette form, set with old European-cut diamond m el e, approx. total wt. 1.25 cts., platinum and gold mount, size 7 1/4.

\$500-700



405



407



406



408



410



409



412



413

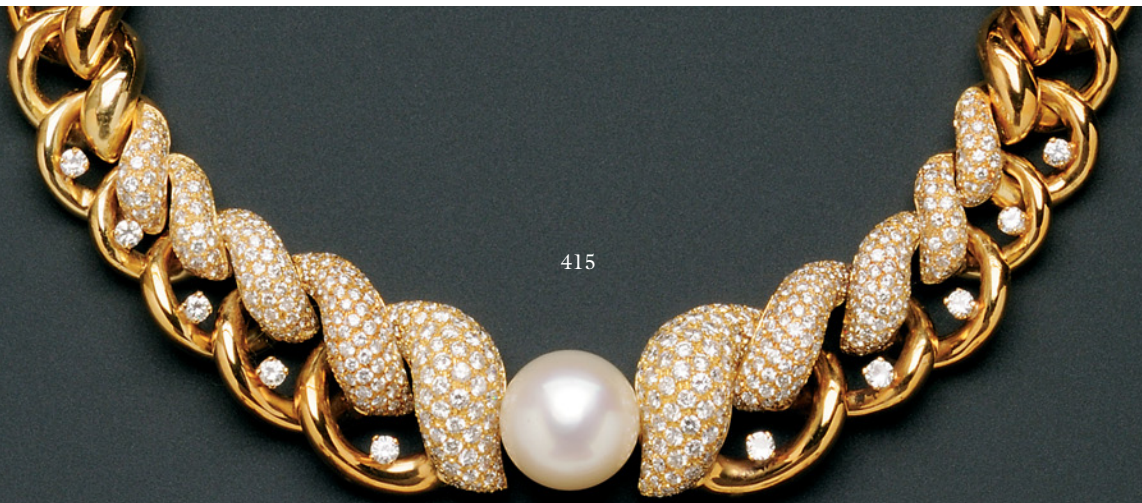


411



414

415.
18k Gold, South Sea Cultured Pearl, and Diamond Necklace, Emis, composed of graduating pavé-set diamond and plain polished links centering a white pearl measuring approx. 18.15 mm, approx. total wt. 20.00 cts., 145.6 dwt, lg. 16 in., signed with presentation sleeve.
\$6,000-8,000
416.
18kt Gold and Diamond Band, Cartier, set throughout with full-cut diamonds, approx. total wt. 5.07 cts., size 5 1/4, no. 637899, French maker's mark and guarantee stamp, signed.
\$3,500-4,500
417.
18kt Gold and Diamond Line Bracelet, prong-set with forty full-cut diamonds, approx. total wt. 10.00 cts., lg. 7 1/4 in.
\$8,000-10,000
418.
18kt Gold and Diamond "Rope" Band, Schlumberger, Tiffany & Co., six rows of rope with full-cut diamond "X" motifs, size 6, signed.
\$2,500-3,500
419.
Platinum, South Sea Pearl, and Diamond Ring, set with a pearl measuring approx. 13.10 mm, framed by a double row of full-cut diamonds, approx. total wt. 4.00 cts., size 6 1/2, (ring guard).
\$2,000-2,500
420.
18kt Gold, Platinum, and Diamond Earclips, Emis, each ridged form bead-set with lines of full-cut diamond mêlée, approx. total wt. 2.80 cts., lg. 3/4 in., signed.
\$1,200-1,800
421.
18kt White Gold, Cultured South Sea Pearl, and Diamond Earclips, Emis, designed as pavé-set diamond tops set with a white pearl measuring approx. 12.40 and 12.20 mm, approx. total diamond wt. 4.06 cts., lg. 1 1/8 in., signed.
\$3,000-4,000
422.
18kt White Gold, Cultured Pearl, and Diamond Necklace, the navette links suspending a fringe of fifteen white cultured pearls with rose overtones, set throughout with full-cut diamond mêlée, approx. total diamond wt. 2.76 cts., lg. 17 1/4 in., (later clasp).
\$1,000-1,500
423.
Platinum, Cultured Pearl, and Diamond Ring, set with a white pearl with rose overtones, flanked by tapered baguettes, together with a white gold and calibr -cut diamond jacket, approx. total wt. 2.25 cts., size 6 3/4.
\$600-800
424.
Baroque South Sea Pearl Rope Necklace, composed of fifty-nine baroque pearls graduating in size from approx. 10.70 x 10.20 to 12.50 to 14.10 mm, completed by a 14kt gold baroque form clasp gypsy-set with diamond m -l -e, lg. 35 in.
\$1,500-2,000
425.
Strand of Cultured Freshwater Pearls, composed of thirty-three round pearls with rose and silver overtones graduating in size from approx. 12.45 to 14.20 mm, completed by a 14kt rose gold clasp gypsy-set with diamond m -l -e, lg. 18 in.
\$1,000-1,500
426.
14kt White Gold and Baroque Freshwater Pearl Chain, designed as twelve white pearls with rose overtones, joined by delicate trace links, lg. 13 in.
\$300-400
427.
Pair of South Sea Pearl and Diamond Drops, each semi-baroque white pearl with rose overtones, capped by single-cut diamond m -l -e, white gold mounts.
\$800-1,200
428.
18kt Gold and Cultured Pearl Bracelet, Morelli, composed of gray and white cultured pearls, with fancy shaped caps, joined by trace links, lg. 7 1/2 in., signed.
\$300-500
429.
18kt Gold, Aventurine, and Pearl Ring, The domed form set with a cabochon, bordered by a triple row of cultured pearls, size 7.
\$150-250
430.
Coral Sautoir, designed as a beadwork rope suspending tassel with fringe, lg. 31 and 3 in.
\$300-500



415



416



417



418



419



420



421

431.
Amethyst, Peridot, and Diamond Ring, centering an oval-cut amethyst flanked by triangular-cut peridot, shoulders and gallery micro-pavé set with diamond m \acute{e} lée, size 7.
\$500-700
432.
18kt Gold and Gem-set Earclips, David Yurman, each ropetwist with cabochon amethyst terminal, faceted peridot highlight, signed, (one peridot heavily chipped).
\$300-500
433.
18kt Gold, Peridot, and Diamond Bracelet, Emis, the hinged bangle set with square-cut peridot and full-cut diamond m \acute{e} lée, approx. total diamond wt. 1.28 cts., 53.2 dwt, interior cir. 6 7/8 in., signed.
\$2,500-3,500
434.
18kt Gold and Gem-set Suite, the carpendants set with fancy-cut colored quartz, full-cut diamond m \acute{e} lée highlights, ring en suite, lg. 7/8 in., size 6 3/4.
\$800-1,200
435.
14kt Gold and Gem-set Bracelet, David Yurman, the ropetwist motif with cabochon amethyst terminals, pink and green tourmaline accents, 17.6 dwt, signed.
\$400-600
436.
18kt Gold and Cultured Pearl Necklace and Bracelet, Bulgari, composed of twenty white cultured pearls with rose overtones, each measuring approx. 8.80 mm, spaced by fancy links, joining to form a long necklace, lg. 23 1/8 in., signed.
\$4,500-5,500
437.
18kt Gold and Gem-set Earclips, Nardi, each designed as a coral button framed by circular-cut tsavorite garnets and pink tourmalines, dia. 5/8 in., signed.
\$2,500-3,000
438.
18kt White Gold, Citrine, and Diamond Ring, set with a fancy-cut citrine, framed by full-cut diamond m \acute{e} lée, full-cut diamond m \acute{e} lée shoulders, size 6 1/2.
\$700-900
439.
18kt Gold and Blue Topaz Ring, Bulgari, set with a sugarloaf stone, size 6 1/4, signed.
\$750-950
440.
18kt Gold and Turquoise Ring, the turquoise bombé form topped by pierced gold, size 6 1/4.
\$2,500-3,000
441.
18kt Gold, Cultured Pearl, and Diamond Earpendants, Elizabeth Locke, each suspending a pearl drop measuring approx. 12.50 mm, full-cut diamond m \acute{e} lée highlights, signed.
\$1,500-2,000
442.
18kt Gold and Tourmaline Lariat Necklace, the anchor links ending in pink and green tourmaline ball terminals, lg. 31 3/4 in.
\$2,500-3,000
443.
Platinum and Diamond Earrings, David Webb, each gypsy-set with nine diamond m \acute{e} lée, dia. 1/2 in.
\$800-1,200
444.
18kt White Gold and Diamond Earstuds, each designed as fancy-cut diamonds joined to resemble one large stone, approx. total wt. 1.14 cts.
\$1,500-2,000

